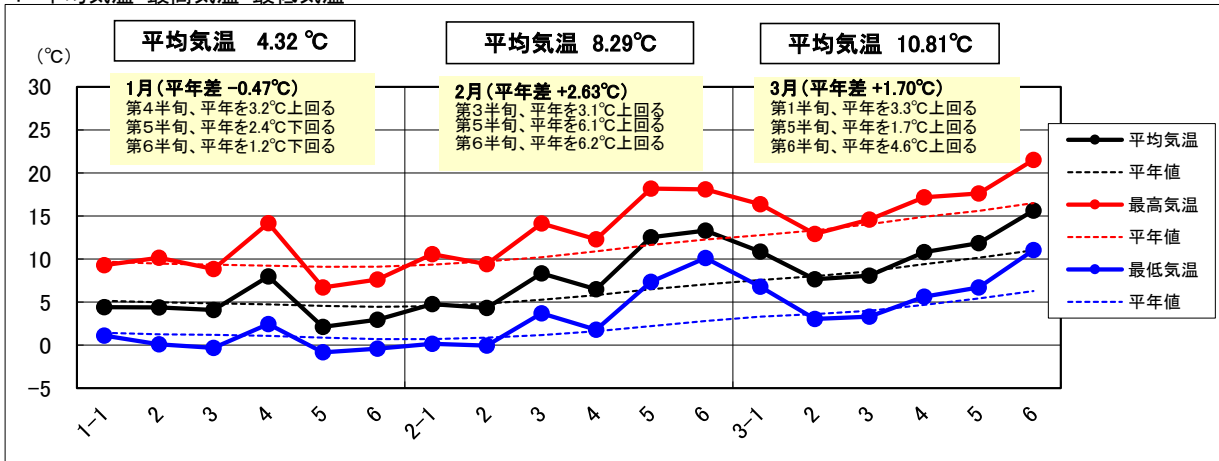
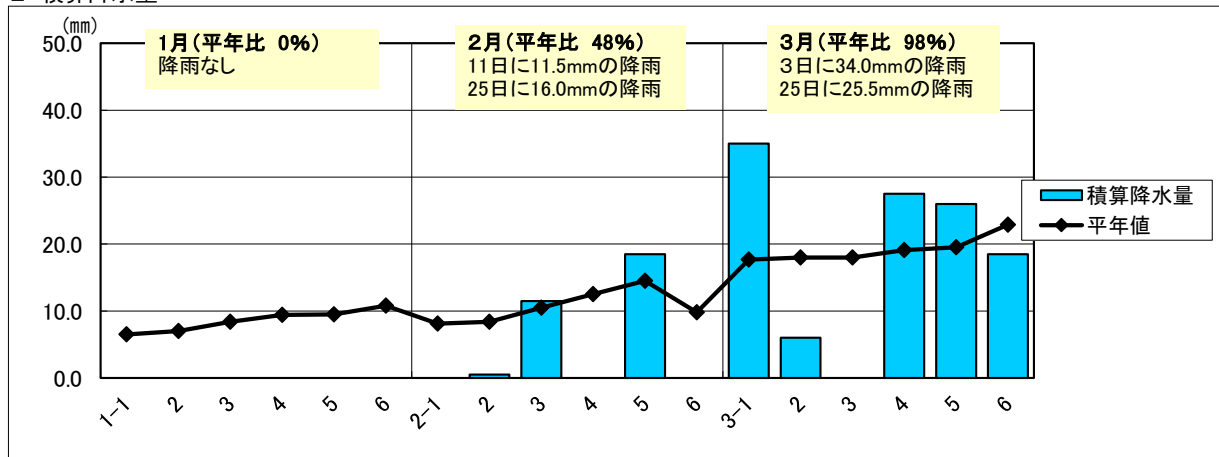


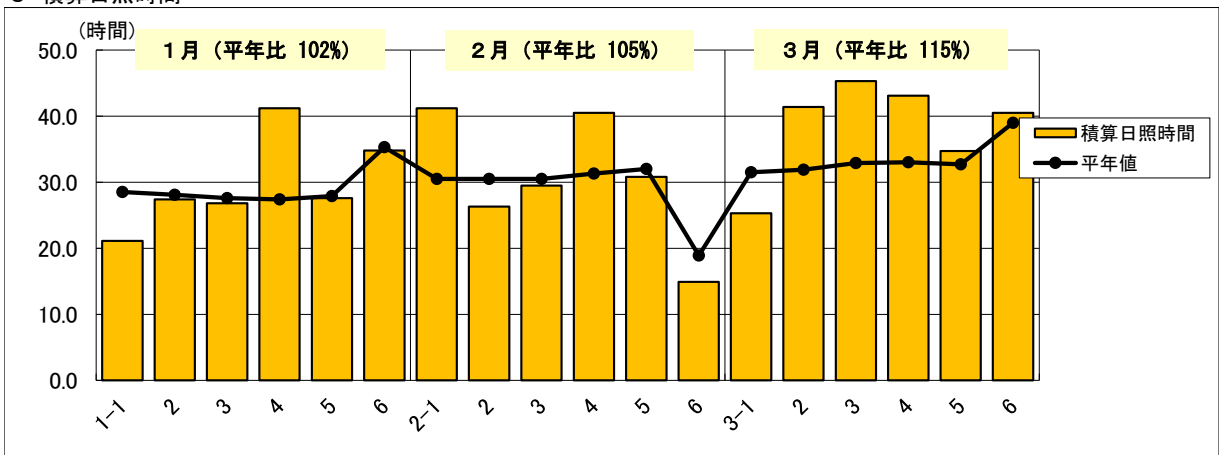
1 平均気温・最高気温・最低気温



2 積算降水量



3 積算日照時間



日付	平均気温	平年値	(平年差)	最高気温	平年値	(平年差)	最低気温	平年値	(平年差)	積算降水量	平年値	(平年比)	積算日照時間	平年値	(平年比)
1-1	4.4	5.2	-0.7	9.3	9.7	-0.4	1.1	1.4	-0.3	0.0	6.5	0%	21.1	28.5	74%
2	4.4	5.0	-0.6	10.1	9.5	0.7	0.1	1.3	-1.2	0.0	7.0	0%	27.4	28.1	98%
3	4.1	4.9	-0.8	8.8	9.3	-0.5	-0.3	1.2	-1.5	0.0	8.4	0%	26.8	27.6	97%
4	8.0	4.7	3.2	14.2	9.2	5.0	2.4	1.1	1.4	0.0	9.4	0%	41.2	27.4	150%
5	2.1	4.6	-2.4	6.7	9.1	-2.4	-0.8	0.9	-1.7	0.0	9.5	0%	27.6	27.9	99%
6	3.0	4.5	-1.5	7.6	9.1	-1.5	-0.4	0.7	-1.1	0.0	10.8	0%	34.8	35.3	99%
2-1	4.8	4.5	0.22	10.6	9.3	1.2	0.2	0.7	-0.5	0.0	8.1	0%	41.2	30.5	135%
2	4.3	4.8	-0.5	9.4	9.7	-0.3	-0.1	0.9	-0.9	0.5	8.4	6%	26.3	30.5	86%
3	8.3	5.3	3.1	14.1	10.2	3.9	3.7	1.2	2.5	11.5	10.5	110%	29.5	30.5	97%
4	6.5	5.8	0.7	12.3	10.9	1.4	1.8	1.6	0.2	0.0	12.5	0%	40.5	31.3	129%
5	12.5	6.5	6.1	18.2	11.6	6.5	7.3	2.2	5.1	18.5	14.5	128%	30.8	32.0	96%
6	13.3	7.1	6.2	18.1	12.3	5.8	10.1	2.8	7.3	0.0	9.8	0%	14.9	18.9	79%
3-1	10.9	7.6	3.3	16.4	12.8	3.6	6.8	3.3	3.5	35.0	17.7	198%	25.3	31.5	80%
2	7.7	8.0	-0.3	12.9	13.3	-0.4	3.0	3.6	-0.6	6.0	18.0	33%	41.4	31.9	130%
3	8.1	8.6	-0.5	14.6	14.0	0.5	3.3	4.0	-0.7	0.0	18.0	0%	45.3	32.9	138%
4	10.8	9.4	1.4	17.2	14.9	2.3	5.6	4.7	0.9	27.5	19.1	144%	43.1	33.0	131%
5	11.8	10.1	1.7	17.6	15.6	2.0	6.7	5.4	1.3	26.0	19.5	133%	34.7	32.7	106%
6	15.6	11.0	4.6	21.5	16.5	5.0	11.0	6.3	4.8	18.5	22.9	81%	40.5	39.0	104%