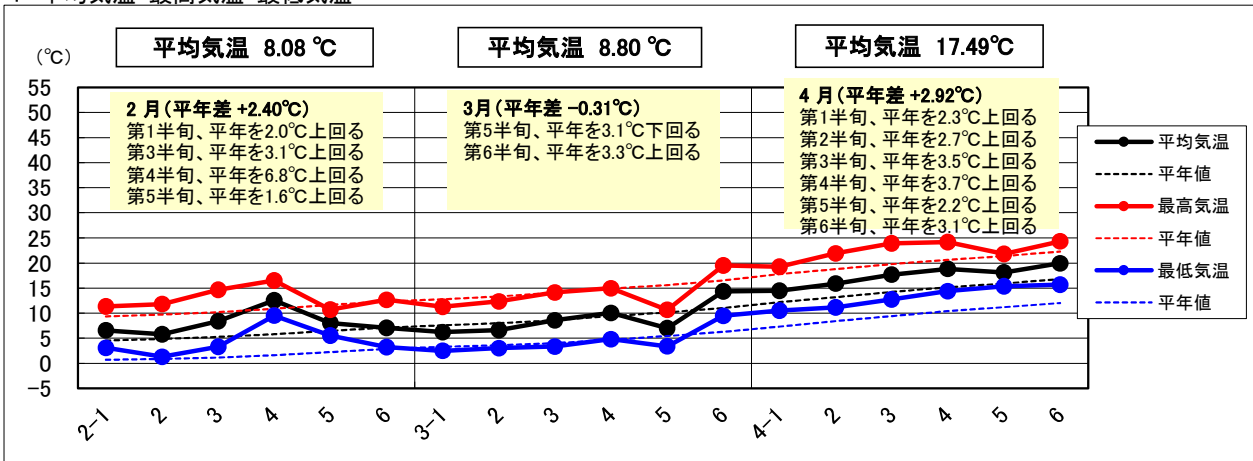
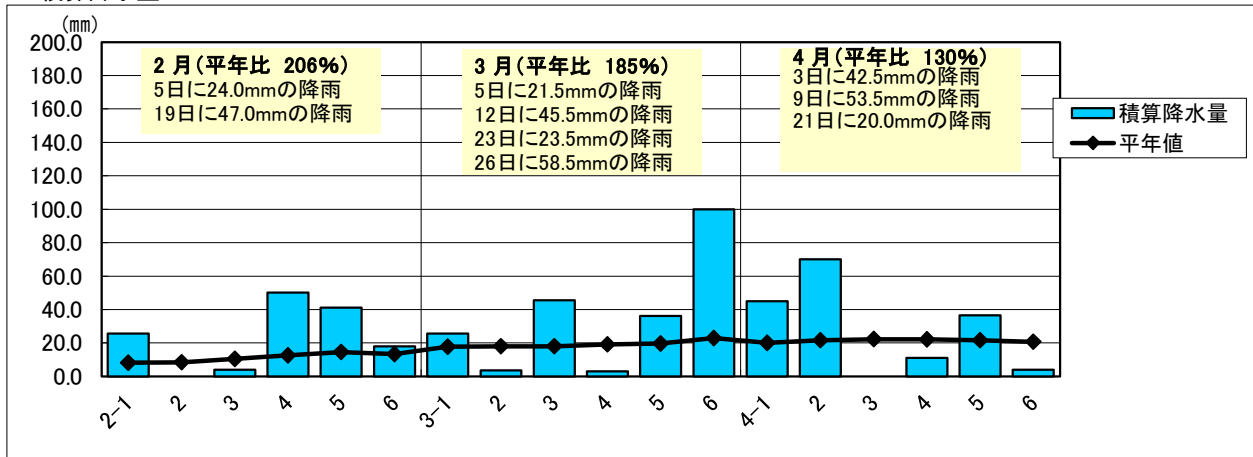


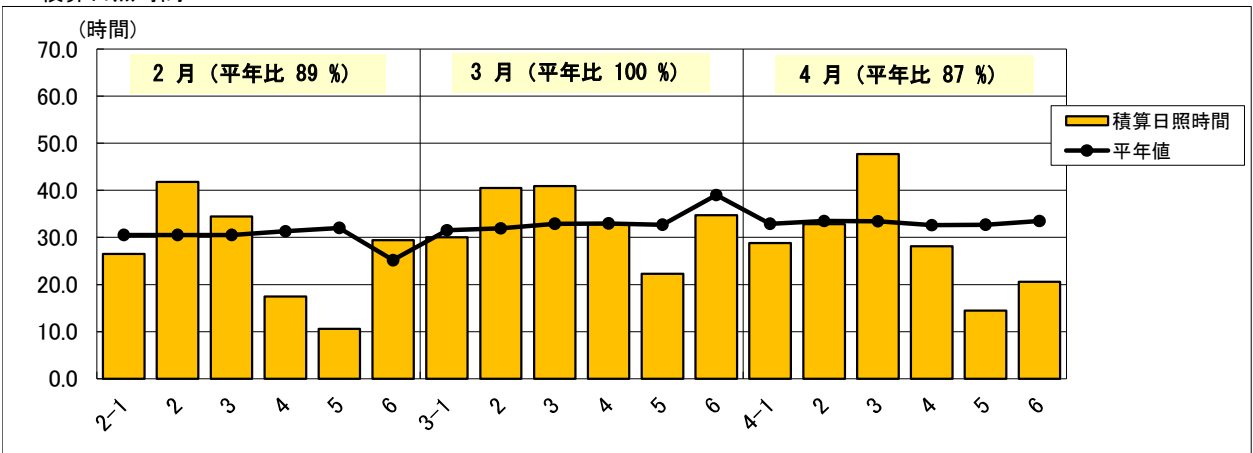
1 平均気温・最高気温・最低気温



2 積算降水量



3 積算日照時間



日付	平均気温	平年値	(平年差)	最高気温	平年値	(平年差)	最低気温	平年値	(平年差)	積算降水量	平年値	(平年比)	積算日照時間	平年値	(平年比)
2-1	6.6	4.5	2.0	11.4	9.3	2.0	3.1	0.7	2.4	25.5	8.1	315%	26.5	30.5	87%
2	5.8	4.8	1.0	11.8	9.7	2.1	1.3	0.9	0.4	0.0	8.4	0%	41.8	30.5	137%
3	8.4	5.3	3.1	14.6	10.2	4.4	3.3	1.2	2.1	4.0	10.5	38%	34.5	30.5	113%
4	12.6	5.8	6.8	16.5	10.9	5.6	9.5	1.6	7.9	50.0	12.5	400%	17.5	31.3	56%
5	8.0	6.5	1.6	10.7	11.6	-0.9	5.5	2.2	3.3	41.0	14.5	283%	10.6	32.0	33%
6	7.1	7.1	0.0	12.7	12.3	0.3	3.3	2.9	0.4	18.0	13.2	136%	29.4	25.2	117%
3-1	6.2	7.6	-1.3	11.3	12.8	-1.5	2.5	3.3	-0.8	25.5	17.7	144%	30.0	31.5	95%
2	6.7	8.0	-1.3	12.4	13.3	-1.0	3.0	3.6	-0.6	3.5	18.0	19%	40.5	31.9	127%
3	8.6	8.6	0.0	14.1	14.0	0.1	3.3	4.0	-0.7	45.5	18.0	253%	40.9	32.9	124%
4	10.0	9.4	0.6	15.0	14.9	0.1	4.8	4.7	0.1	3.0	19.1	16%	32.8	33.0	99%
5	7.0	10.1	-3.1	10.6	15.6	-5.0	3.4	5.4	-2.0	36.0	19.5	185%	22.3	32.7	68%
6	14.3	11.0	3.3	19.5	16.5	3.0	9.5	6.3	3.2	100.0	22.9	437%	34.7	39.0	89%
4-1	14.5	12.2	2.3	19.2	17.8	1.5	10.5	7.3	3.2	45.0	20.1	224%	28.8	32.9	88%
2	15.9	13.2	2.7	21.9	18.8	3.1	11.1	8.4	2.7	70.0	21.6	324%	32.8	33.5	98%
3	17.7	14.2	3.5	23.9	19.8	4.1	12.8	9.4	3.4	0.0	22.3	0%	47.7	33.4	143%
4	18.8	15.1	3.7	24.2	20.6	3.6	14.4	10.4	4.0	11.0	22.0	50%	28.1	32.6	86%
5	18.1	15.9	2.2	21.8	21.4	0.4	15.4	11.2	4.2	36.5	21.6	169%	14.5	32.7	44%
6	19.9	16.8	3.1	24.3	22.3	2.0	15.7	12.0	3.7	4.0	20.7	19%	20.6	33.5	61%