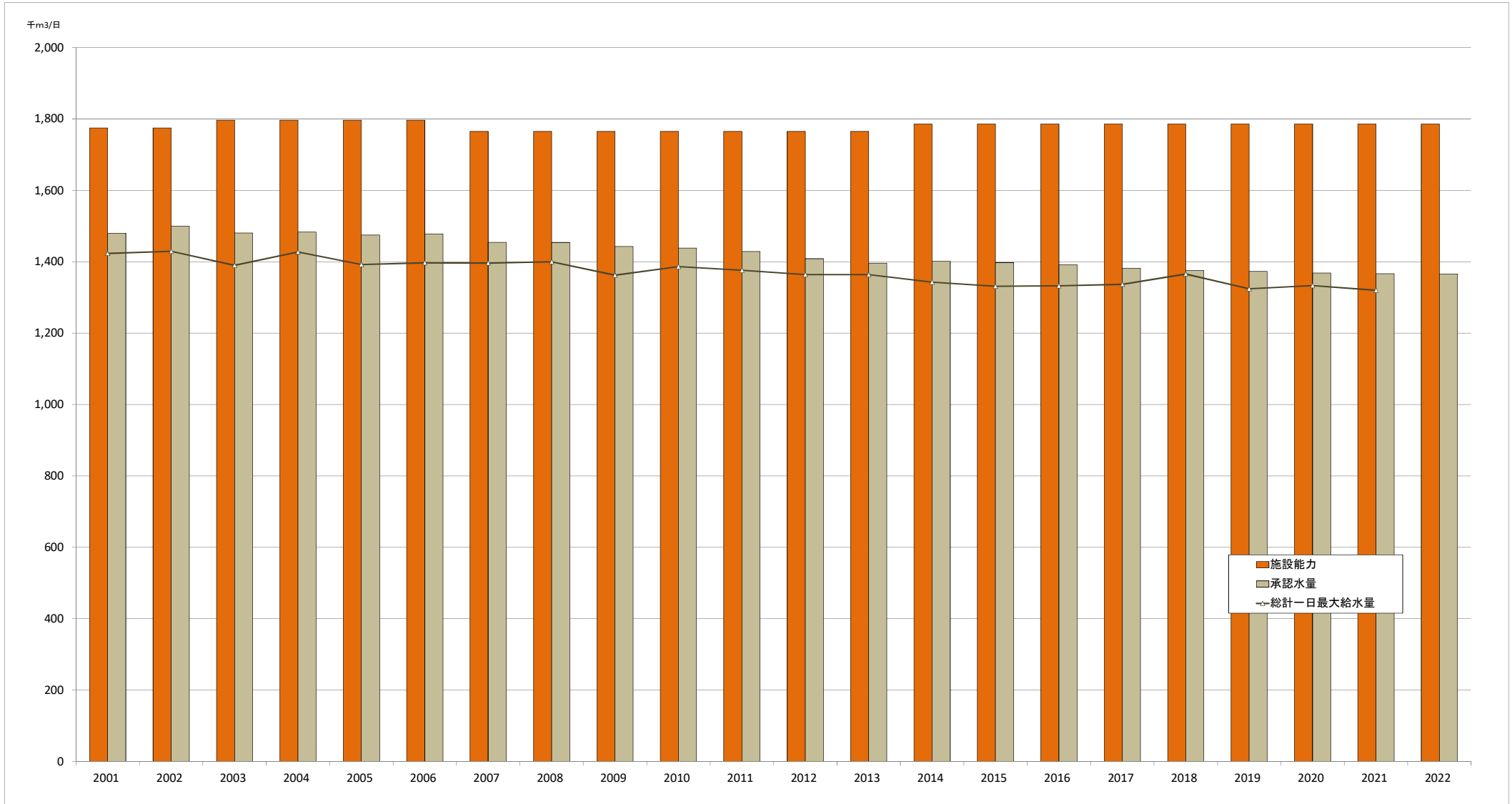


施設能力と承認基本給水量と総計一日最大給水量



年度	2001	2002	2003	2004	2005	2006	2007	2008	2009	2010	2011	2012	2013	2014	2015	2016	2017	2018	2019	2020	2021	2022
施設能力	1,775	1,775	1,797	1,797	1,797	1,797	1,765	1,765	1,765	1,765	1,765	1,765	1,765	1,786	1,786	1,786	1,786	1,786	1,786	1,786	1,786	1,786
承認水量	1,480	1,500	1,481	1,483	1,475	1,478	1,454	1,454	1,443	1,438	1,429	1,408	1,396	1,401	1,398	1,392	1,381	1,375	1,373	1,368	1,367	1,366
総計一日最大給水量	1,423	1,429	1,390	1,427	1,392	1,397	1,396	1,400	1,362	1,386	1,376	1,364	1,364	1,343	1,331	1,332	1,337	1,365	1,324	1,333	1,320	1,320