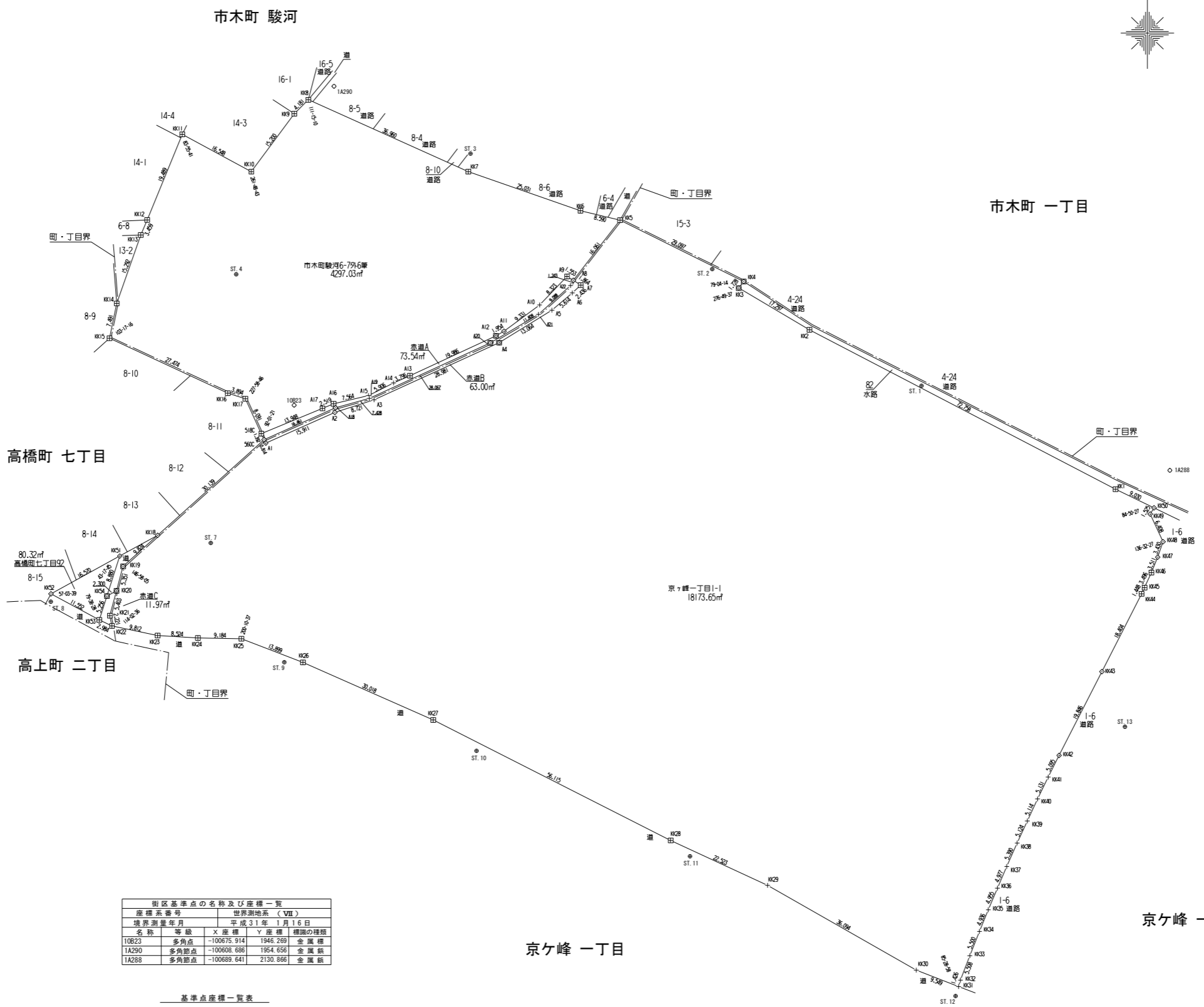


豊田市



平成30年度成果表

測点	Xn	Yn	(Xn+1 - Xn-1)Yn	距離
KK1	-100693.604	2119.416	79590.429048	72.758
KK2	-100690.027	2064.881	87106.405590	11.297
KK3	-100651.214	2039.982	20730.297084	1.728
KK4	-100649.840	2041.031	29239.810106	29.697
KK5	-100636.888	2014.975	148.012500	16.061
AB	-100649.568	2005.116	-27462.093758	1.864
A7	-100650.584	2006.679	-5395.958831	2.436
A6	-100652.257	2004.907	-10595.933489	5.614
A5	-100655.869	2000.608	-20974.374272	13.064
A4	-100662.741	1989.497	-37607.461791	28.981
A3	-100674.772	1963.131	-28844.283783	8.721
A2	-100677.434	1854.826	-7837.787250	15.911
A1	-100683.897	1940.286	-11127.540210	0.814
S60C	-100683.169	1939.920	-37673.246400	30.139
KK18	-100703.317	1917.505	-51218.476655	9.824
KK19	-100709.890	1910.194	-22409.482951	5.351
KK20	-100715.048	1908.804	-19824.838344	5.403
KK21	-100720.266	1907.400	-14095.686000	2.221
KK22	-100723.438	1907.986	-8014.905065	9.313
KK23	-100724.461	1917.466	-4856.941378	8.524
KK24	-100724.971	1925.976	-1255.736352	9.184
KK25	-100725.119	1935.159	-9969.839168	13.899
KK26	-100729.123	1945.127	-33392.844607	20.018
KK27	-100742.260	1975.583	-74098.191581	56.115
KK28	-100767.630	2025.636	-70607.940652	22.527
KK29	-100777.117	2046.084	-55976.218912	38.094
KK30	-100794.988	2077.424	-44332.228160	9.549
KK31	-100798.457	2086.321	-4387.533063	1.426
KK32	-100797.091	2086.733	13572.114432	5.508
KK33	-100791.953	2087.719	21417.246076	5.500
KK34	-100786.837	2090.740	20252.998380	4.936
KK35	-100782.266	2092.604	19124.307956	4.955
KK36	-100777.688	2094.525	19141.803975	4.977
KK37	-100773.127	2098.495	19904.123530	5.390
KK38	-100768.204	2098.691	20115.852335	5.124
KK39	-100763.542	2100.818	19618.700638	5.114
KK40	-100758.913	2102.953	19446.376771	5.131
KK41	-100754.295	2105.231	19304.962710	5.095
KK42	-100749.743	2107.520	18854.384640	19.846
KK43	-100742.063	2116.537	72727.247888	18.404
KK44	-100715.665	2124.894	37610.623900	3.448
KK45	-100714.363	2125.528	9528.742024	3.496
KK46	-100711.162	2125.980	13676.481400	3.511
KK47	-100711.933	2125.372	13825.514752	3.430
KK48	-100704.686	2129.419	19318.089168	6.408
KK49	-100698.861	2126.748	15165.839988	1.525
KK50	-100697.555	2127.536	11184.465752	9.030
信	面積	36347.308531		
面	積	18173.65426555		
地	積	18173.65	㎡	

測点	Xn	Yn	(Xn+1 - Xn-1)Yn	距離
KK6	-100634.934	2006.610	20457.388950	25.031
KK7	-100626.693	1982.974	46399.608626	36.960
KK8	-100611.535	1949.265	24829.704625	4.181
KK9	-100614.468	1946.284	-29474.524896	15.200
KK10	-100626.679	1937.232	-8426.952000	16.548
KK11	-100618.818	1922.670	-19537.399240	19.489
KK12	-100626.851	1915.278	-49844.114439	3.459
KK13	-100640.039	1913.935	-33710.137155	15.292
KK14	-100654.464	1908.859	-41544.402716	7.491
KK15	-100661.803	1907.353	-36048.917100	27.474
KK16	-100674.364	1902.277	-24607.547595	9.894
KK17	-100674.538	1935.990	-16529.482620	8.091
S18C	-100681.902	1939.342	-39390.439654	13.948
A17	-100676.575	1952.233	12234.166541	2.513
A16	-100675.625	1954.566	5251.918842	7.564
A15	-100673.888	1961.928	8628.559344	5.900
A14	-100671.227	1967.201	6242.572190	3.796
A13	-100669.688	1970.676	-19618.079680	19.386
A12	-100661.272	1988.799	18627.091434	1.954
A11	-100660.332	1990.513	12940.325013	9.331
A10	-100654.771	1998.006	23088.957336	8.323
AB	-100648.776	2003.780	10425.667340	1.553
AB	-100649.568	2005.116	23836.819008	16.061
信	面積	8594.079255		
面	積	4297.036025		
地	積	4297.03	㎡	

測点	Xn	Yn	(Xn+1 - Xn-1)Yn	距離
KK51	-100707.705	1909.519	897.479330	16.570
KK52	-100715.685	1884.986	-25497.481797	11.587
KK53	-100721.157	1905.170	-895.429900	5.258
KK54	-100716.155	1906.787	25650.088724	8.880
信	面積	160.656562		
面	積	80.3282910		
地	積	80.32	㎡	

測点	Xn	Yn	(Xn+1 - Xn-1)Yn	距離
S18C	-100681.902	1939.342	-12788.021148	1.392
S60C	-100683.169	1939.920	18562.864800	10.461
A18	-100676.457	1954.951	17029.578161	7.428
A19	-100674.458	1962.105	28831.785875	28.067
A20	-100662.782	1987.629	35202.897219	11.808
A21	-100656.741	1997.779	24203.025885	9.088
A22	-100650.667	2004.534	14390.649688	1.243
AB	-100649.568	2005.116	3791.674356	1.553
AB	-100648.776	2003.780	-10425.667340	8.323
A10	-100654.771	1998.006	23088.957336	9.331
A11	-100660.332	1990.513	12940.325013	1.954
A12	-100661.272	1988.799	18627.091434	19.386
A13	-100669.688	1970.676	-19618.079680	3.796
A14	-100671.227	1967.201	-6242.572190	5.900
A15	-100673.888	1961.928	-8628.559344	7.564
A16	-100675.625	1954.566	-5251.918842	2.513
A17	-100676.575	1952.233	-12234.166541	13.948
信	面積	147.083414		
面	積	73.547070		
地	積	73.54	㎡	

測点	Xn	Yn	(Xn+1 - Xn-1)Yn	距離
S60C	-100683.169	1939.920	-14433.004800	0.814
A1	-100683.897	1940.286	11127.540210	15.911
A2	-100677.434	1854.826	7837.787250	8.721
A3	-100674.772	1963.131	28844.283783	28.981
A4	-100662.741	1989.497	37607.461791	13.064
A5	-100655.869	2000.608	-20974.374272	5.614
A6	-100650.584	2006.679	-5395.958831	1.864
AB	-100649.568	2005.116	-166.424628	1.243
A21	-100656.741	1997.779	-24203.025885	11.808
A20	-100662.782	1987.629	-35202.897219	28.067
A19	-100674.458	1962.105	-28831.785875	7.428
A18	-100676.457	1954.951	-17029.578161	16.461
信	面積	126.007778		
面	積	63.0038890		
地	積	63.00	㎡	

測点	Xn	Yn	(Xn+1 - Xn-1)Yn	距離
KK54	-100716.155	1906.787	-11648.581783	2.254
KK53	-100721.157	1905.170	-11970.183110	2.884
KK22	-100722.438	1907.866	1689.808606	2.221
KK21	-100720.266	1907.400	14095.686000	5.403
KK20	-100715.048	1908.804	7847.092244	2.300
信	面積	23.942967		
面	積	11.9714785		
地	積	11.97	㎡	

境界系番号	世界測地系 (VII)
10B23	多角点 -100675.914 1946.269 金属標
1A290	多角点 -100608.686 1954.656 金属標
1A288	多角点 -100689.641 2130.866 金属標

測点名	X座標	Y座標
ST.1	-100671.795	2078.525
ST.2	-100647.217	2034.410
ST.3	-100622.863	1983.427
ST.4	-100645.306	1934.058
ST.7	-100704.928	1928.683
ST.8	-100717.318	1894.974
ST.9	-100730.055	1944.174
ST.10	-100748.766	1984.690
ST.11	-100770.991	2029.717
ST.12	-100800.425	2085.690
ST.13	-100743.665	2121.398

境界点座標一覧表

測点名	X座標	Y座標
A1	-100683.897	1940.286
A2	-100674.434	1963.131
A3	-100674.772	1963.131
A4	-100662.741	1989.497
A5	-100655.869	2000.608
A6	-100652.257	2004.907
A7	-100650.584	2006.679
A8	-100649.568	2005.116
A9	-100648.776	2003.780
A10	-100654.771	1998.006
A11	-100660.332	1990.513
A12	-100661.272	1988.799
A13	-100669.688	1970.676
A14	-100671.227	1967.201
A15	-100673.888	1961.928
A16	-100675.625	1954.566
A17	-100676.575	1952.233
A18	-100676.457	1954.951
A19	-100674.458	1962.105
A20	-100662.782	1987.629
A21	-100656.747	1997.779
A22	-100660.667	2004.534
S18C	-100681.902	1939.342
S60C	-100683.169	1939.920
KK1	-100693.604	2119.416
KK2	-100690.027	2064.881
KK3	-100651.214	2039.982
KK4	-100649.840	2041.031
KK5	-100636.888	2014.975
KK6	-100634.934	2006.610
KK7	-100626.693	1982.974
KK8	-100611.535	1949.265
KK9	-100614.468	1946.284
KK10	-100626.679	1937.232
KK11	-100618.818	1922.670
KK12	-100626.851	1915.278
KK13	-100640.039	1913.935
KK14	-100654.464	1908.859
KK15	-100661.803	1907.353
KK16	-100674.364	1902.277
KK17	-100674.538	1935.990
KK18	-100673.888	1961.928
KK19	-100677.434	1854.826
KK20	-100674.772	1963.131
KK21	-100674.457	1917.466
KK22	-100674.461	1917.466